



Luminous Harmony “How-to”

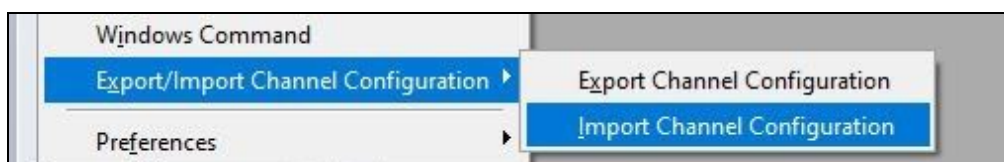
Importing “Create Your Own Harmony” Sequences - LOR v4.4.4

1. **Download Your Files:** Download the .lms file of your sequence from your Google Drive folder or email (depending on how you requested it be sent). You will also need the Amazon .mp3 of the song corresponding to the sequence; purchase links can be found at <http://luminousharmony.com/cyoh.html>. *If you use music from another source, the sequence effects may not be in time with the music.*

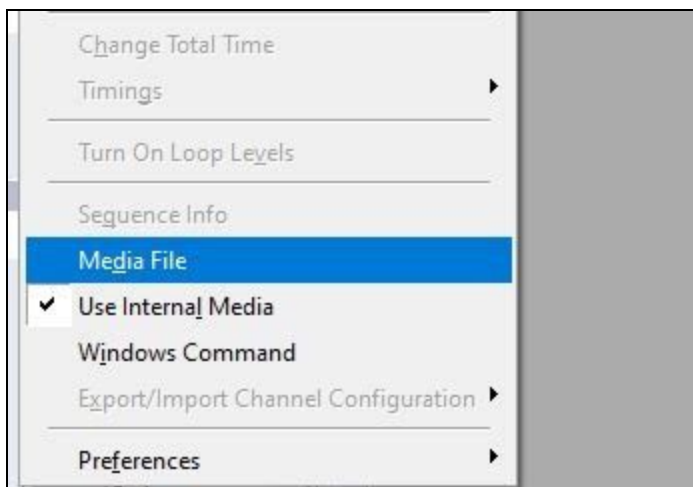
Save both of these files somewhere on your computer that is not the downloads folder or the desktop. A common place to save files is Documents-->Light-O-Rama then the respective “Sequences” or “Audio” folder, but you can actually save files wherever you want. If you move either file after you’ve opened the sequence, you will need to repeat steps 4 and 5 of this document.

2. **Create Your Visualizer (Optional):** Open the Light-O-Rama “Visualizer” software from your start menu to create your Visualization. You do not need a Visualizer in order to open and play Create Your Own Harmony sequences, but it is helpful if you would like to see a preview of what the show will look like when playing it on your computer. For more information about how to create an S4 Visualizer file, please view this walkthrough from Light-O-Rama: <http://www1.lightorama.com/PDF/WhatsNewInS4Visualizer.pdf>
3. **Open Your Sequence:** After creating (or deciding not to create) a Visualizer file, open the LOR Sequence Editor. Find your .lms file by going to “File-->Open.” The file will automatically open with a channel configuration corresponding to the C.Y.O.H. sequence; controllers will be in order 01 through 04 (depending on how which version you purchased), and the channels will be in order 1-16 in each controller group.

If you would like to import your own channel configuration over the sequence, you can do so if you purchased the “Modifiable” version of the C.Y.O.H. show by going to Edit-->Export/Import Channel Configuration-->Import Channel Configuration. *Make sure your channel configuration is in the same channel order as the C.Y.O.H. sequence or else the effects will not line up.*



4. **Add Your Music:** Once your sequence is open, the first thing you need to do is add the music file or else the sequence will not play. Do this by going to Edit-->Media File, then locating your music. "Use Internal Media" should be checked by default. Once the music file is successfully added, you will see a blue and white waveform appear in the sequencing area of the software if you have "View Waveform" enabled (View-->Waveform--> Full/Half Height). You can test and make sure your music has been added by clicking the green play "All" icon.



5. **Save Your Sequence:** Once your sequence is saved as a .lms, you can add it to your show line up via the Show Editor and Schedule Editor (if you plan to run your show with a PC) or create an SD card. For more information setting up and playing your shows, please view the following LOR documentation.

LOR 4.4.4 Documentation:

http://www1.lightorama.com/downloads/4.4.4/help/index.html?whats_new.htm

(Click this link, then "The Light-O-Rama Software Package," then the sections below)

Show Editor - "Show Editor"

Schedule Editor - "Schedule Editor"

Create an SD Card - "Hardware Utility-->Light-O-Rama MP3 Directors"

Playing Your Show - "Control Panel"

More LOR Tutorials - <http://www1.lightorama.com/tutorials/>

LOR FAQs - <http://www1.lightorama.com/faqs/>



Additional Information

Changing Controller/Unit IDs

Create Your Own Harmony sequences will download with the following Unit ID assignments unless otherwise requested. If you would like to change these assignments and therefore move the respective effects to a different controller, you will need to change the Unit ID (Only available with a "Modifiable" C.Y.O.H. sequence). Remember, effects will look best on groupings of fixtures that match the configuration of your original download.

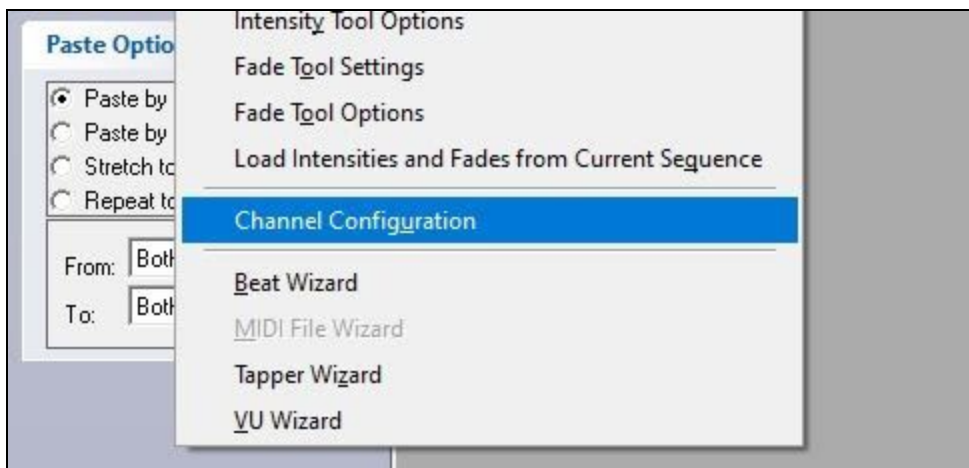
16 Channels - Controller 01

32 Channels - Controllers 01 and 02

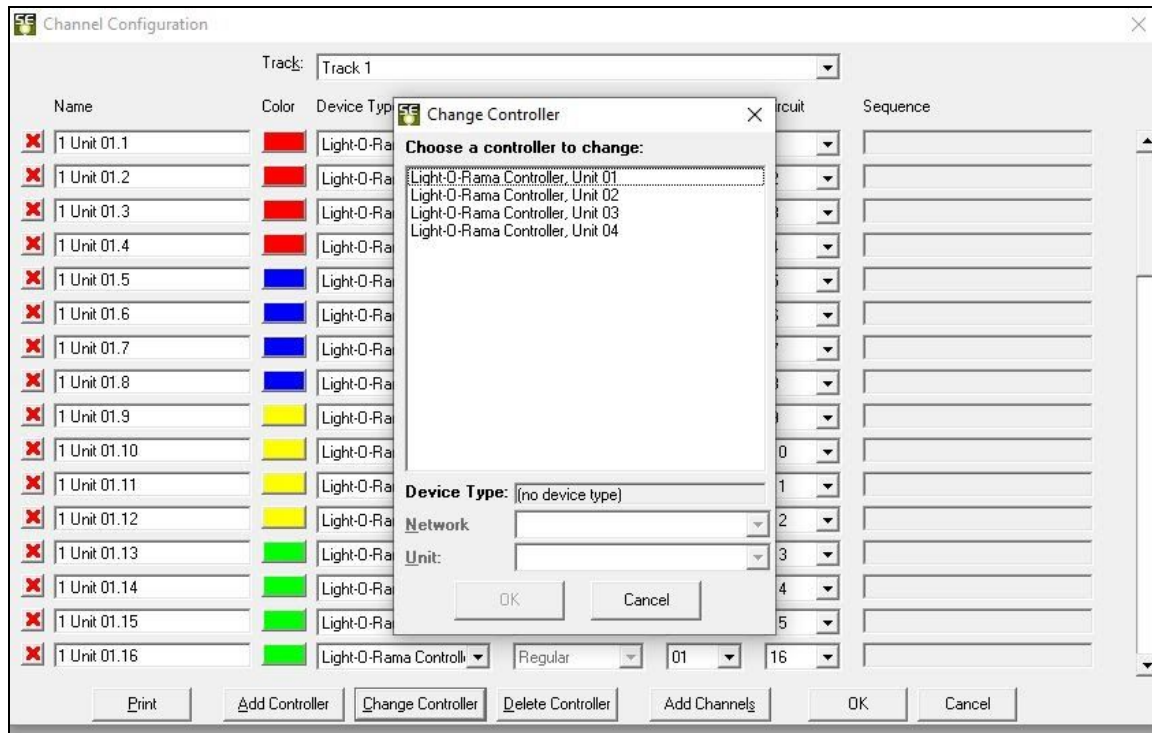
48 Channels - Controllers 01, 02, and 03

64 Channels - Controllers 01, 02, 03, and 04

To change Unit IDs or channel assignments, go to Tools-->Channel Configuration.



You can change channel assignments individually, or if you need to change an entire controller to a different number, you can click "Change Controller" at the bottom of the Channel Configuration window. (Pictured on following page) Be careful not to scroll with your mouse wheel if your cursor is directly over any drop down boxes; you will change the data on accident. Use the side scrolling feature or keep your cursor over greyed out boxes of the window.



Select the controller you want to bulk change, then select the number of the new Unit ID. Make sure to click save in the Change Controller window AND the Channel Configuration window.

